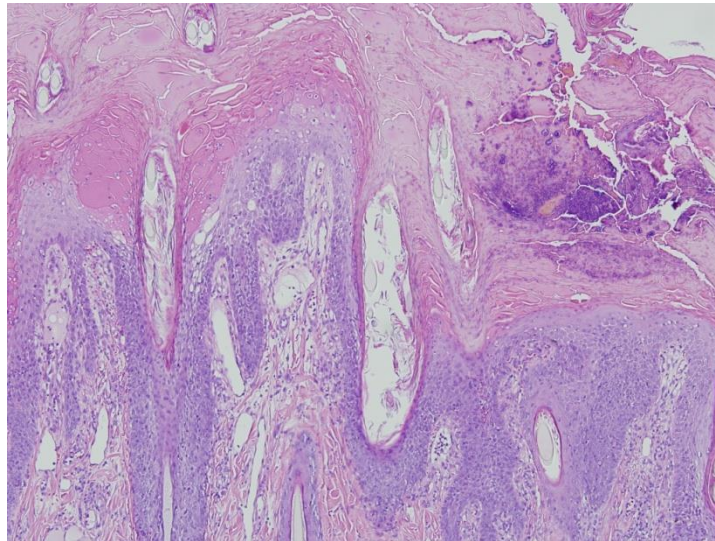


Specialty VETPATH

2017 Laboratory Manual

**High quality, detail-oriented veterinary diagnostic pathology:
Pathology done right.**



**“As is our pathology, so is our practice.”
–Sir William Osler**



Physical Address: 3450 16th Ave W Suite 303
Seattle WA 98103

Billing Address: 3450 16th Ave W Suite 303
Seattle WA 98103

Phone: 206-453-5691

General emails: info@specialtyvetpath.com

Website: www.specialtyvetpath.com

Laboratory Hours: Monday-Friday 7:00 AM to 7 PM PST
Saturday 9:00 AM to 4:00 PM PST
Sunday CLOSED

Courier Service Area: Seattle-Tacoma (contact laboratory for details)

Cytopathology

All cytopathology reports include a microscopic description, interpretation, and comments. Pathologists are available for case consultation by phone or email.

Cytopathology: \$73.00

Slides from FNA, imprint, scraping, or fluid samples (when no fluid is submitted)

Sample type: Slide(s), stained and/or unstained; up to 8 will be evaluated per site; additional slides from the same site will be evaluated but an extra site fee will be charged.

Additional sites: \$51.00 per site (or for evaluation of >8 slides for a single site)

**Please note a revision in charging for multiple lymph node aspirates: When aspirates of multiple lymph nodes are submitted in a patient with generalized or multifocal lymphadenopathy and suspected lymphoma these aspirates will be evaluated, reported and charged as a single site. Multiple lymph node aspirates submitted for metastasis check will be evaluated, reported and charged as individual/multiple sites.*

Fluid Analysis with Cytopathology: \$81.00

Joint fluid analysis, bronchoalveolar lavage, transtracheal wash, cavitory effusion, bile, aspirate from a fluid-filled mass – specific parameters analyzed and reported are dependent on source and volume received.

Sample type: Fluid in EDTA tube. Two unstained slides should also be prepared at time of sample collection and submitted with the fluid sample.

Additional fluid samples: \$57.00

CSF Analysis: \$81.00

Includes nucleated and red blood cell counts.

Sample type: CSF in EDTA and/or plain tubes.

Bone Marrow Aspirate: \$89.00

Sample type: Slides; minimum of 4 unstained, +/- stained; submit with current CBC results and an unstained blood smear for evaluation (no additional charge for blood smear evaluation).

Complete Bone Marrow Evaluation: \$131.00

Includes evaluation of both a bone marrow aspirate and bone marrow biopsy.

Sample type: Formalin-fixed bone marrow biopsy and bone marrow aspirate slides; minimum of 4 unstained. Submit with CBC report from time of biopsy and unstained blood smear for full interpretation of sample.

Follow up cytopathology – slides: \$51.00**

Requires approval of Pathologist. For repeat samples to evaluate changes, progression etc. in a previously sampled site when submitted within 30 days of the original submission. Cases are eligible for discounted follow up pricing only when original cytopathology was read at SVP.

Follow up fluid analysis and cytopathology: \$57.00**

Requires approval of Pathologist. For repeat sampling to assess changes, progression or response to therapy etc. in joint fluid, cavitory effusion, airway wash or other fluid sample, when submitted within 30 days of the original submission. Cases are eligible for discounted follow up pricing only when original cytopathology was read at SVP.

Urinalysis: \$30.00

UPC only: \$46.00

Urinalysis with UPC: \$65.00

Rivalta Test: \$36.50

Alkaline Phosphatase, PAS, Gram, Fite's or trichrome stain: \$36.50

Silver or copper stain: \$57.00

Hematology

Manual differential and slide review – mammalian species: \$14.00

1-2 blood films made at time of blood collection preferred; LTT accepted.

Manual differential and slide review with packed cell volume (PCV) and total solids (TS): \$20.00

1 LTT required; 1-2 blood films made at time of blood collection also preferred.

Avian/herptile manual differential only: \$20

1-2 blood film slides strongly preferred; 1 heparin (GTT) tube preferred with slides and required if no slides submitted; LTT acceptable if appropriate for the species.

**Avian/herptile complete blood count (CBC) with manual differential: \$25.00
(Includes hemocytometer cell count and PCV/TS if quantity sufficient)**

1-2 blood film slides strongly preferred; 1 heparin (GTT) required or LTT if appropriate for the species.

Pathologist blood film review: \$73.00

1-2 blood film slides strongly preferred; 1 LTT also preferred with slides and required if no slides submitted.

Add-on pathologist blood film review: \$45.00

For review ordered following technician review and manual differential.

Dermatopathology

All dermatopathology reports include a gross description, microscopic description, morphologic diagnosis, and comments. Routine special stains for infectious agents are performed and reported when indicated at no additional cost. Pathologists are available for case consults via phone or email.

Dermatopathology – multiple punch or wedge biopsies: \$106.00

Multiple punch or wedge biopsies from multiple sites representative of a multicentric or generalized process. No additional charge per site for samples which can be processed on 1-2 slides – depending on size, 2-4 punches can be processed per slide.

Dermatopathology – punch or wedge biopsies, additional site(s): \$59.00 per additional slide

Sample type: Formalin-fixed tissue – punch or wedge biopsies

Dermatopathology – 2nd Opinion: \$106.00

Please request 5 unstained recut slides or (if possible) the tissue block for the original case and send with a test request form and copy of the original pathology report.

Digits or nail biopsies for Dermatopathology: \$122.50

Cases presenting with single or multiple nail abnormalities for which special processing of the nail(s) is required to allow microscopic examination of the nail and nail bed.

Sample type: Formalin-fixed tissue: amputated digit, nail(s) or nail biopsy

Surgical Pathology

All surgical pathology reports include a gross description, microscopic description, morphologic diagnosis, and comments. For excisional biopsies of malignant tumors, reports include quantitative and qualitative margin evaluation and mitotic index; if a validated grading system exists for the tumor type a grade will be assigned. Pathologists are available for case consultation by phone or email.

Biopsy: Please note that the type classification for mass excisions is based on the sample size and complexity rather than the specific tissue or organ type. Please contact us if you have any questions about the correct test to order and/or about correct method of sample submission.

Endoscopic gastrointestinal biopsies: \$84.00

Type 1: \$84.00

Simple incisional biopsies (rhinoscopic, punch, wedge, etc).

Sample type: Formalin-fixed tissue

Type 2: \$88.00

Simple excisional biopsies; soft tissue lesion involving anal glands, adrenal glands, lymph nodes, ovaries, testes, thyroids, ear canals; small bone biopsies (Jamshidi or very small fragments). Includes margin evaluation when indicated.

Sample type: Formalin-fixed tissue

Type 3: \$119.50

Large and/or complex soft tissue excisional biopsies: these include masses too large to fit in the 750 mL formalin container, kidneys, eyeballs, gallbladder, liver lobes, lung lobes, larger bone biopsies that require sectioning with a bone saw and decalcification, spleens*, intestinal resections**. Includes margin evaluation when indicated

*Spleens that are too large to fit in a gallon Ziplock bag are considered type 4.

**Intestinal resections that are too large to fit in the 750 mL formalin container are considered type 4.

Sample type: Formalin-fixed tissue, or fresh, chilled tissue (please contact the laboratory or see our website for details on sample submission and which types of samples should be submitted fresh vs. fixed)

Type 4: \$150.00

Complex samples with soft tissue and bone (mandibulectomies/maxillectomies, limbs, body wall resections with ribs, digits, etc.), exceptionally large/complex soft tissue specimens such as mammary chains (tissue with multiple masses, or multiple mammary glands), and very large spleens and large intestinal resections (see above). Includes margin evaluation and decalcification when indicated. Lymph nodes in situ with samples (e.g., limbs, intestinal resections, mammary chains) are included in the evaluation.

Sample type: Formalin-fixed tissue, or fresh, chilled tissue (please contact the laboratory or see our website for details on sample submission and which types of samples should be submitted fresh vs. fixed)

Surgical Pathology – 2nd Opinion: \$84.00

Please request 5 unstained recut slides or (if possible) the tissue block for the original case and send with a test request form and copy of the original pathology report.

Additional Sites

When submitting additional surgical biopsies from the same patient

Endoscopic: \$59.00

Type 1: \$59.00

Type 2: \$62.00

Type 3: \$84.00

Type 4: \$105.00

Alkaline Phosphatase, PAS, Gram, Fite's or trichrome stain: \$36.50

Silver or copper stain: \$57.00

Supporting material: For complex and amputation specimens involving bone, please include radiographs and/or radiology report to aid in dissection and selection of sections for diagnosis and margin evaluations. For visceral samples (e.g., liver, lung, intestines etc.) please include an ultrasound report if available. Reports and electronic images can be sent to info@specialtyvetpath.com.

Immunohistochemistry

Antibodies available for both IHC and ICC unless otherwise indicated

CD3	CD18	CD20	CD79a
CD117 (c-KIT)	Chromagranin	Coronavirus	Cytokeratin-MNF 116
Cytokeratin-34BE12	Desmin	E-Cadherin	Factor VIII
Ki67	Melan-A	Melanosome	MUM-1
Smooth Muscle Actin	Tyrosinase	TTF-1	Vimentin

Single antibody (add-on to biopsy or cytology): \$115.00

Antibody panels: Prices for panels are only valid when these antibodies are ordered and run/reported concurrently

Lymphoma panel (CD3/CD79a or CD3/CD20): \$165.00

Panel of 2 antibodies (any, other than lymphoma panel) \$186.00

Panel of 3 antibodies (any) \$256.00

Panel of 4 antibodies (any) \$325.00

If immunostaining is ordered on cases originally read at another laboratory there will also be a charge for a second opinion interpretation. Please contact the laboratory if you have outside cases you would like to submit for immunostaining.

Research studies: contact the laboratory to request a quote.

Necropsy

All full necropsy prices include group cremation. Private cremation and return of ashes is available for an additional charge.

Animals <25g: \$100.00

Small fish, amphibian, other aquatics. Up to 5 animals per submission (~1 animal per slide).

Sample type: Whole body in formalin.

Animals <50g: \$150.00

Small lizards, birds, mammals (mouse); medium fish and amphibians.

Sample type: Whole body in formalin.

Animals <500g: \$300.00

Medium lizards and birds; small mammals (rat, guinea pig); large fish.

Sample type: Whole body fresh or frozen.

Animals 0.5kg-1.5kg: \$400.00

Large lizards, birds (chicken, raptor), mammals (ferret, puppy, kitten).

Sample type: Whole body fresh or frozen.

Animals <5kg: \$500.00 Small dogs, cats, rabbits.

Sample type: Whole body fresh or frozen.

Animals <15kg: \$600.00

Small to medium dogs.

Sample type: Whole body fresh or frozen.

Animals >15kg: Call for pricing.

Large dogs, small ruminants, mini-pigs.

Sample type: Whole body fresh or frozen (please call for case specific submission instructions).

Microscopic evaluation only

Multiple tissue samples collected at gross necropsy

Up to 10 tissues: \$150.00

>10 tissues: \$300.00

Sample type: Formalin-fixed tissue

Reporting

Surgical Pathology and Dermatopathology: Reported within 3-10 days of receipt by our laboratory, Monday - Friday. Small samples have a faster turnaround time. Results may be delayed 7-10 business days in cases requiring additional fixation, decalcification, additional tissue processing or special stains. Delays may also occur when case submission volume is high.

Cytopathology: Cases are reported within 24 hours of receipt by our laboratory, M-S. Cases picked up on the courier run Saturday night will be reported by noon the following Monday.

STAT Fees:

Cytopathology, Monday – Saturday: \$30.00

Results reported (verbal or written) by 10:00 AM Monday through Saturday for samples picked up the night prior; within 2 hours of receipt by the laboratory for Fedex deliveries.

Biopsy, Monday - Friday: \$40.00

Small biopsies received fixed will be reported within 24-36 hours of receipt. TAT depends on time of receipt, size of sample and fixation status at time of receipt; contact the laboratory for expected TAT when submitting large or unfixed samples STAT.

Reports are available through our portal (for portal-enabled clients; contact laboratory for details) or distributed via email.